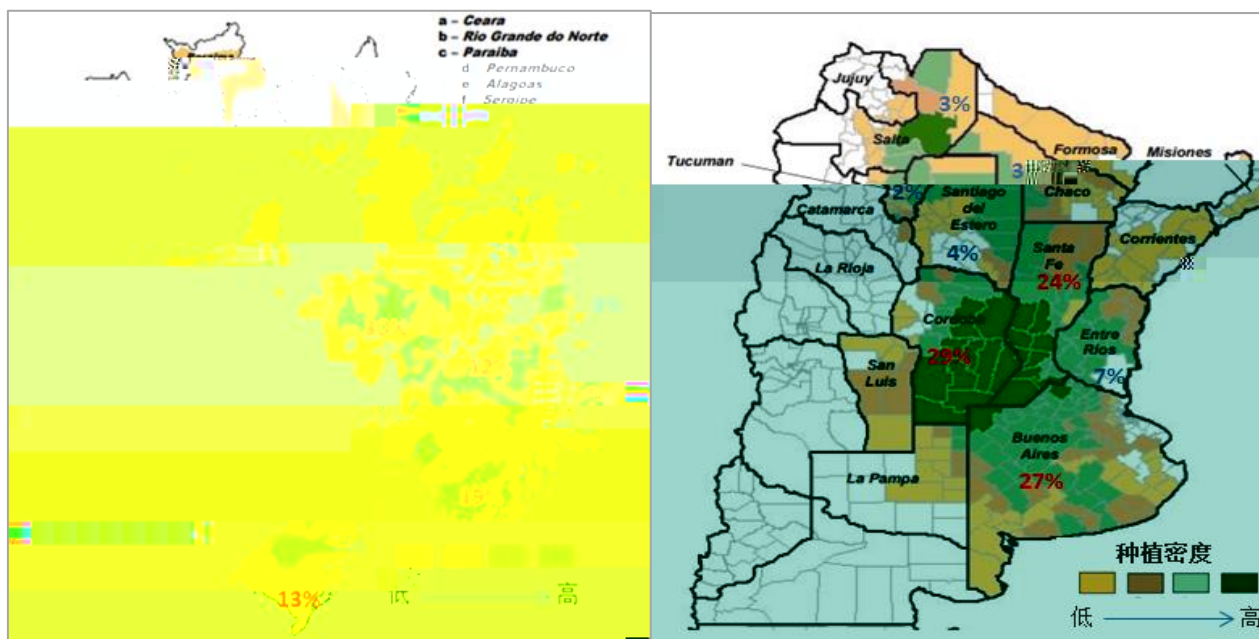
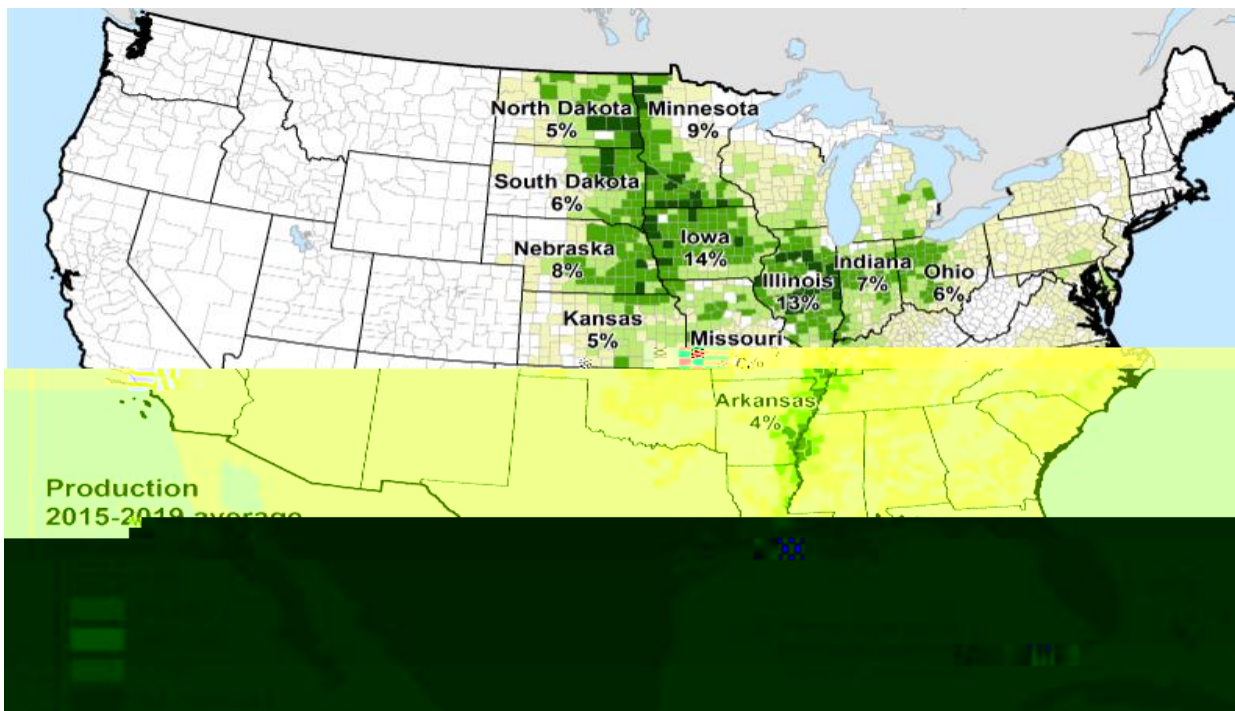
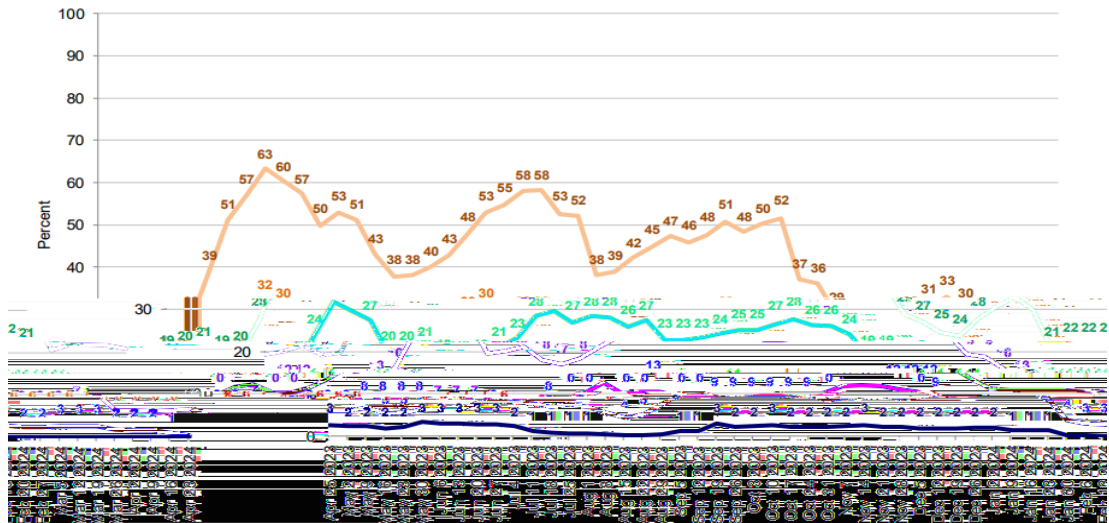
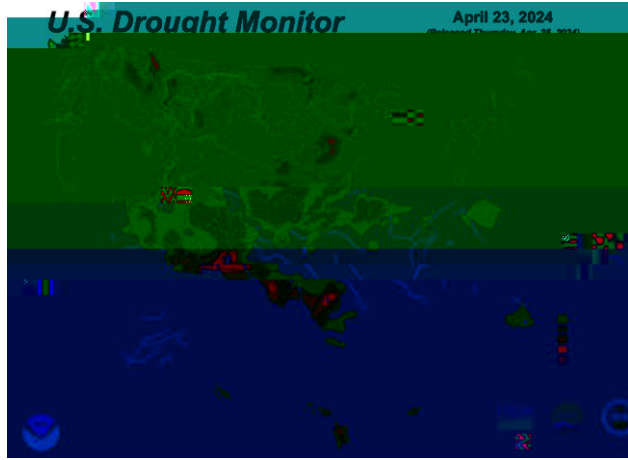
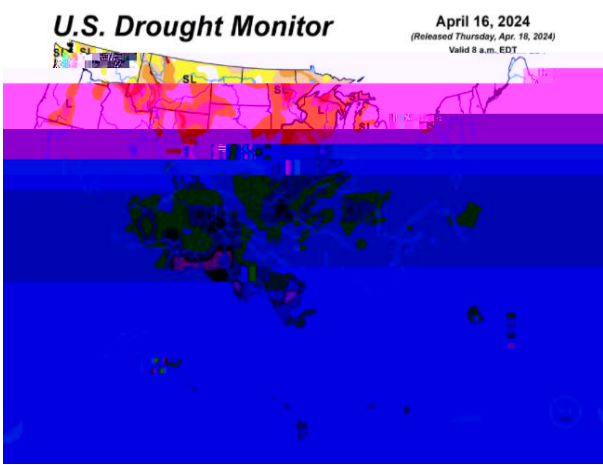


- 1
- 1.1
- 1.2
  
- 2
- 2.1
- 2.2 SST
- 2.3 ONI
  
- 3
- 3.1
- 3.2
  
- 4
- 4.1
- 4.2
  
- 5
- 5.1
- 5.2

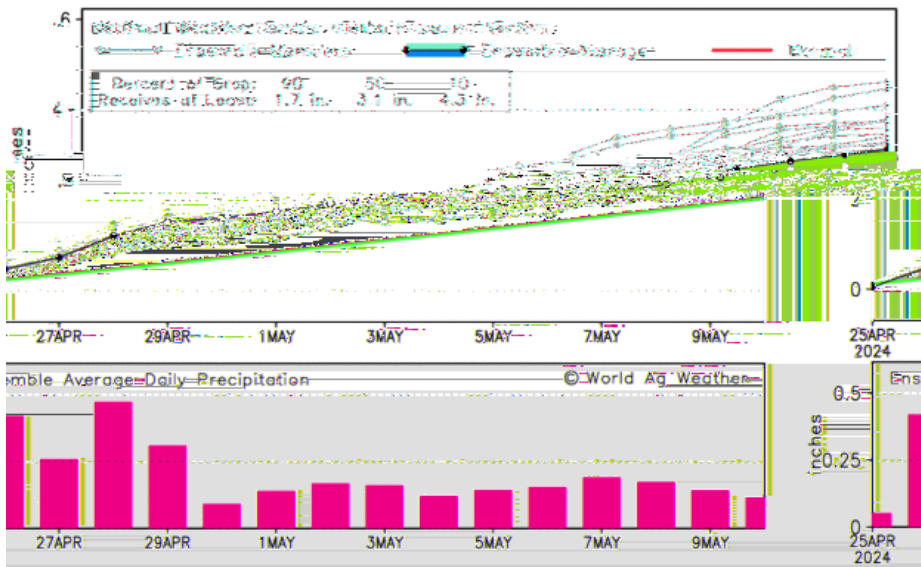






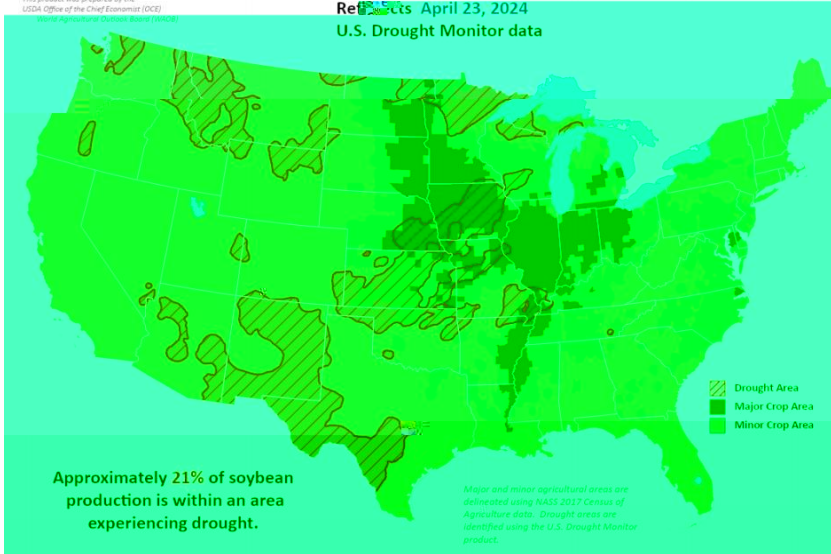
Drought percentages are approximated using the U.S. Drought Monitor product.

- Moderate or more intense drought (D1+)
- Severe or more intense drought (D2+)
- Extreme or more intense drought (D3+)
- Exceptional drought (D4)

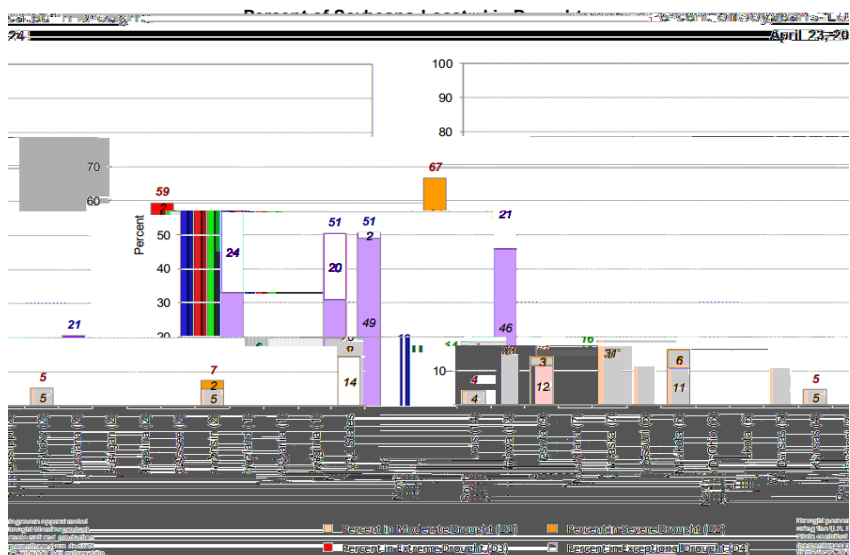
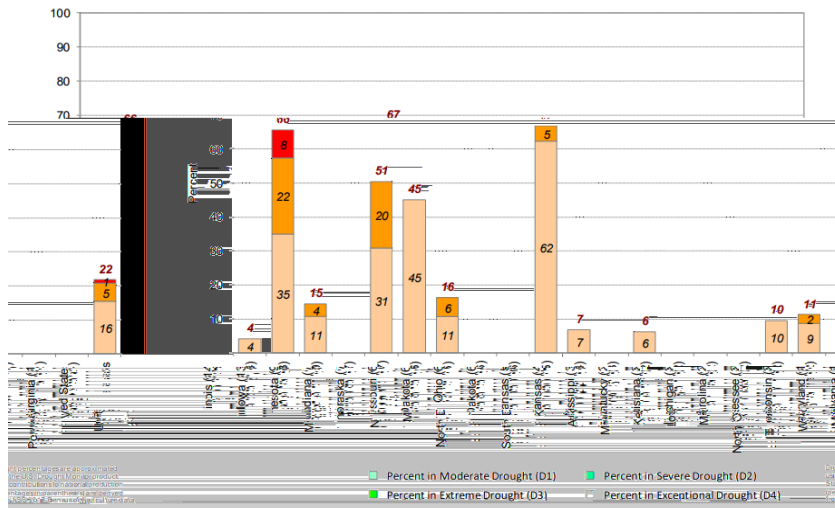


### Soybean Areas in Drought

Revised April 23, 2024  
U.S. Drought Monitor data

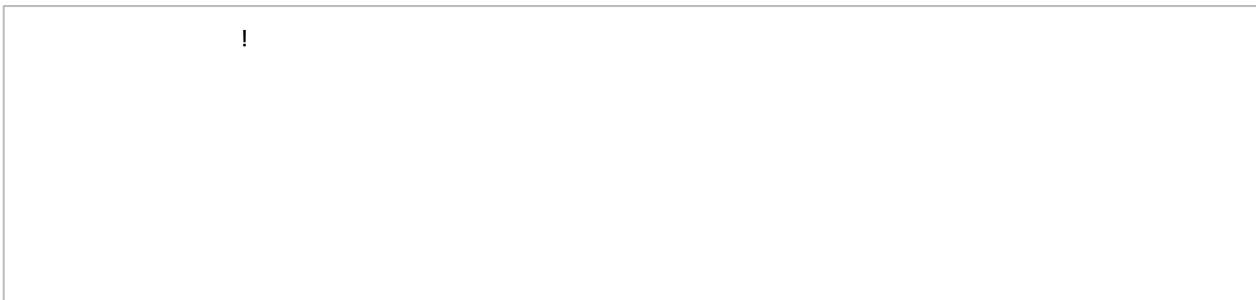
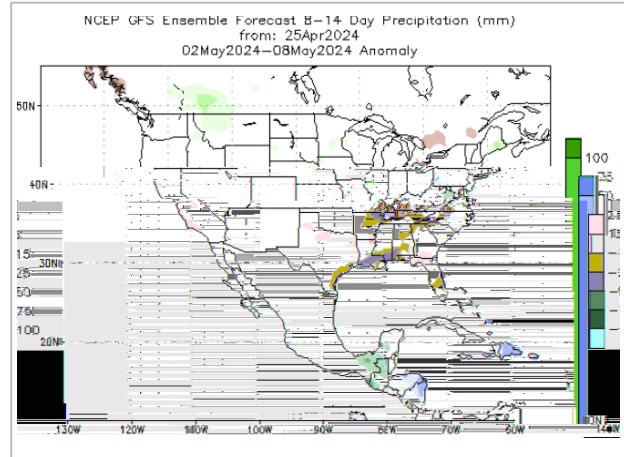
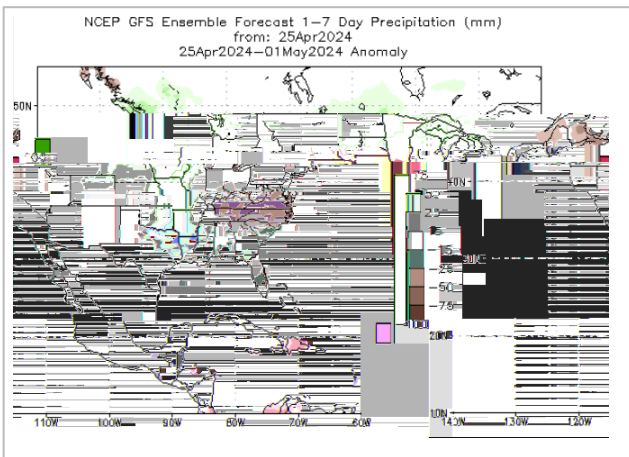
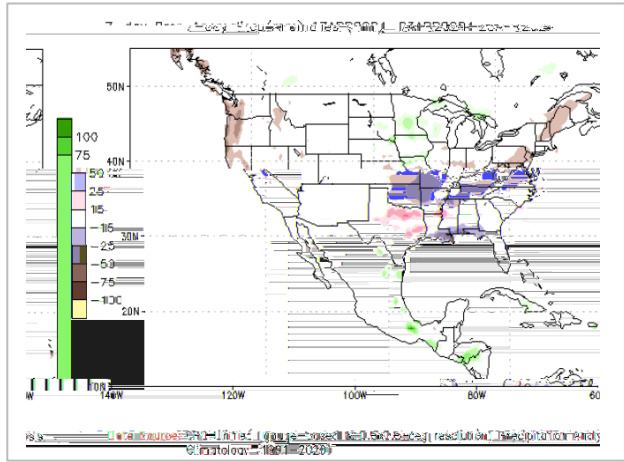
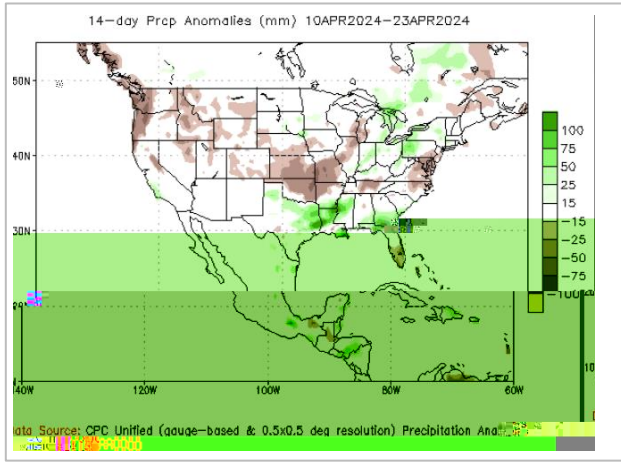


Percent of Soybeans Located in Drought  
April 16, 2024

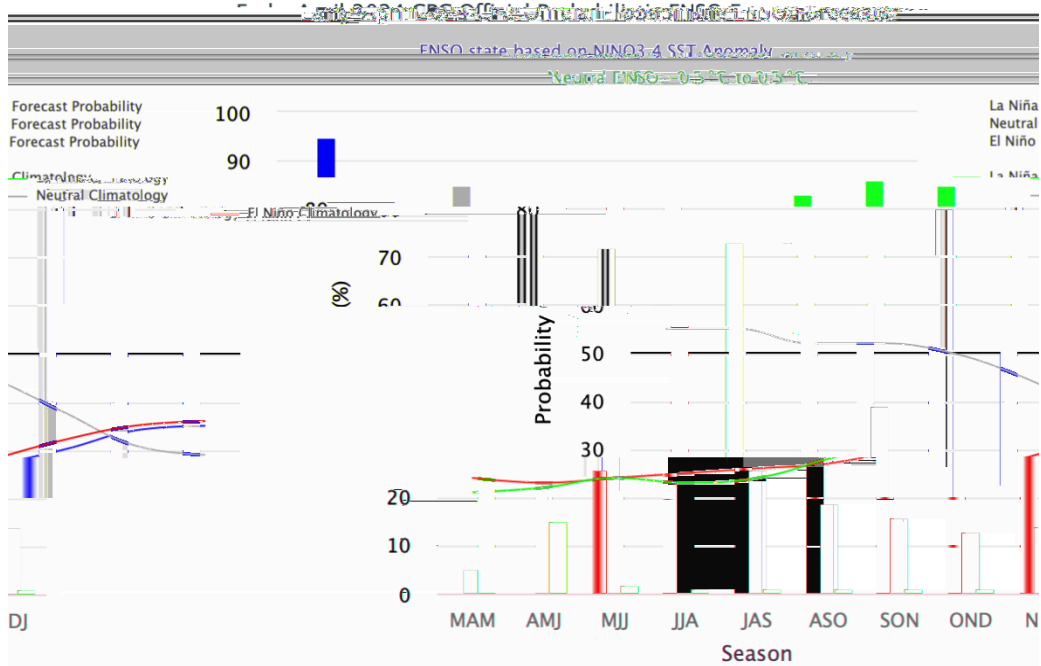


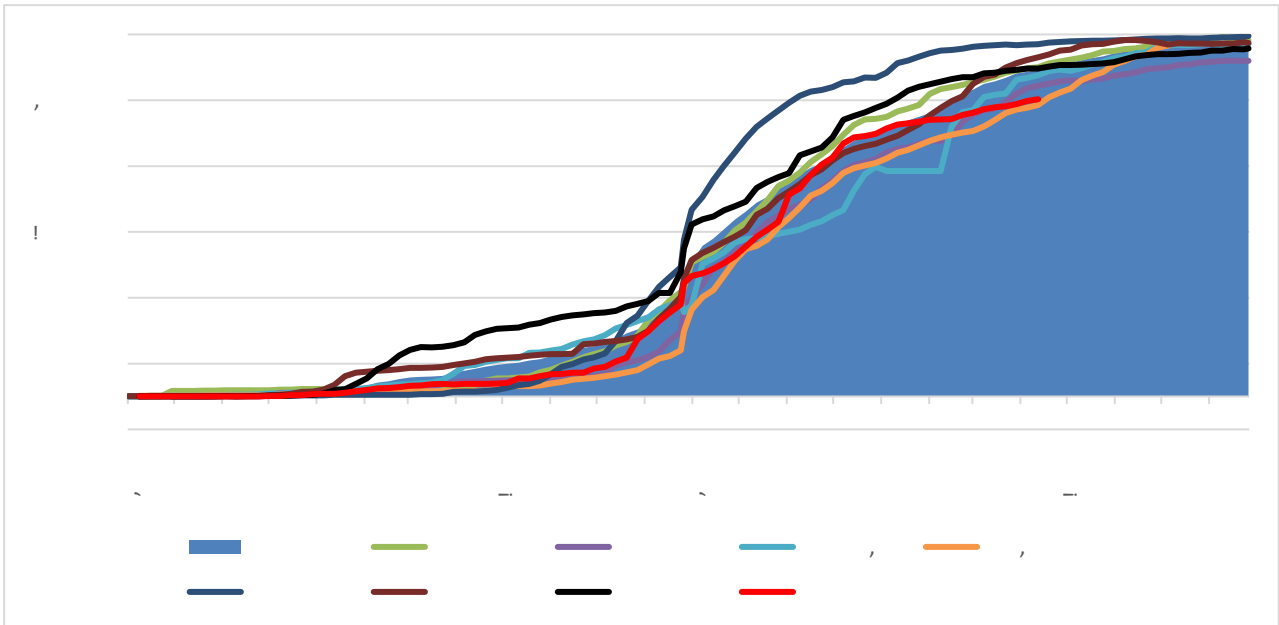
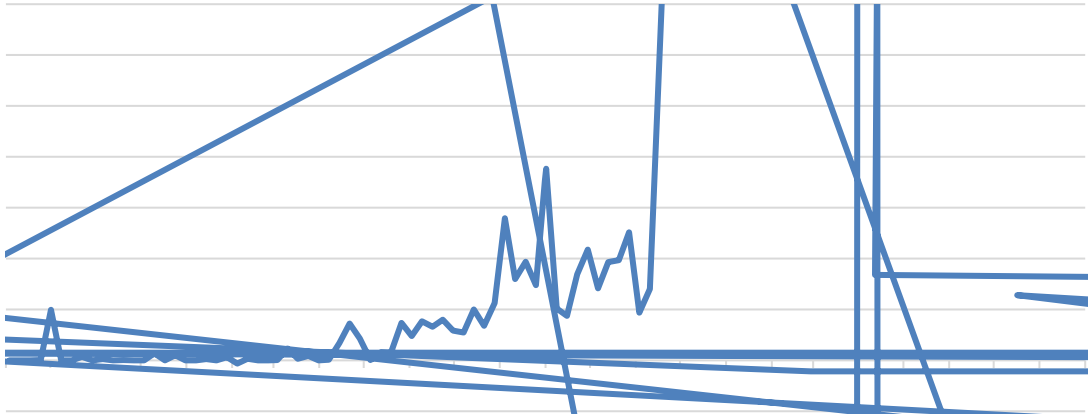




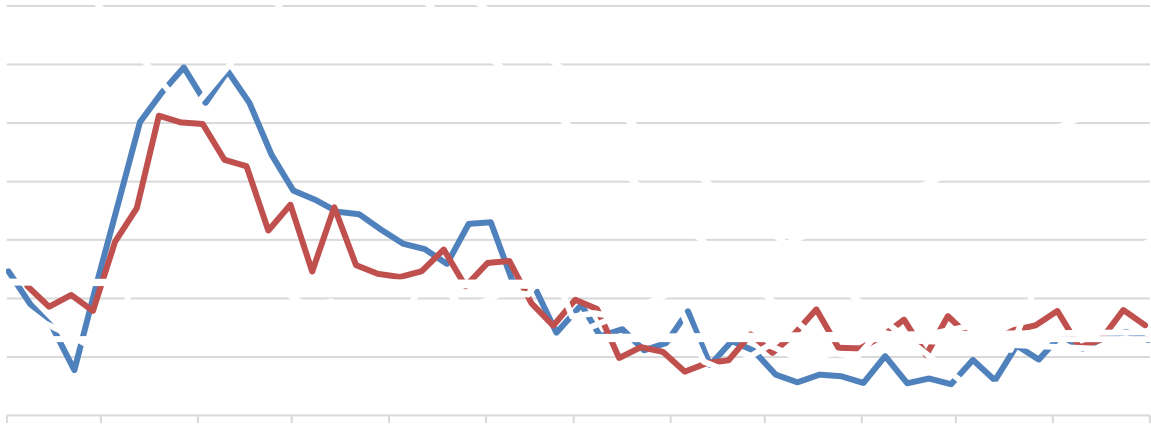


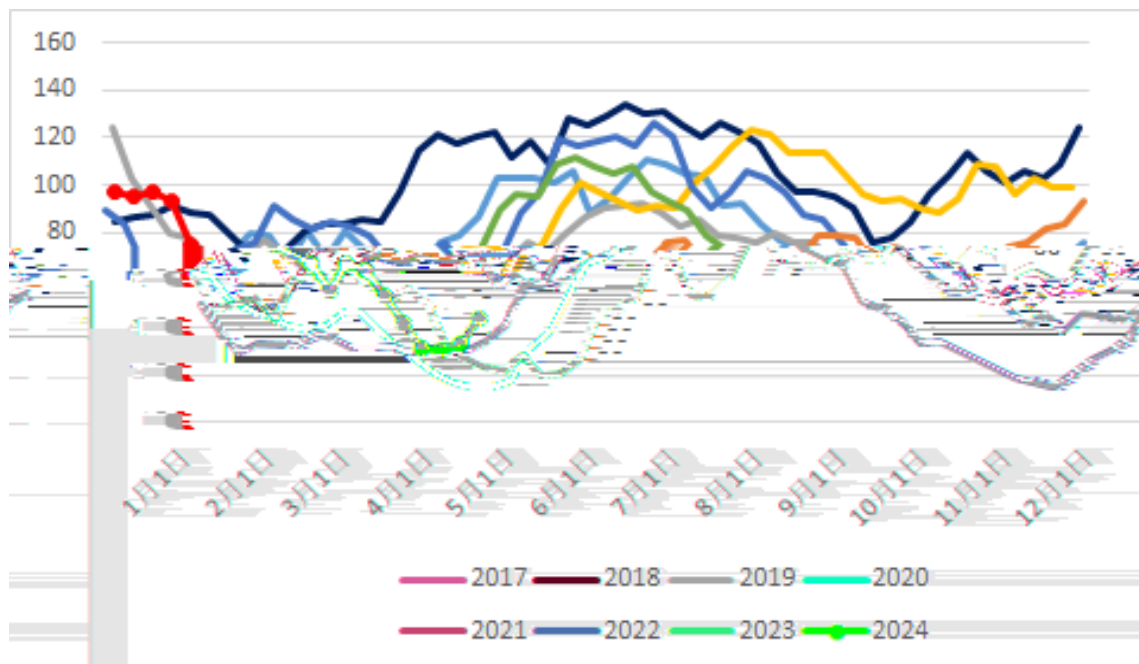
		0.3	0	-0.2	-0.3	-0.4							
							-0.4	-0.3	-0.3	-0.4			
				-0.2	0.1	0.4							
				0.4	-0.1								
						-0.4							
				-0.4	-0.2	0.1	0.3	0.3	0.3	0.2	0	-0.2	
	-0.4	-0.3	-0.2	-0.2	-0.3	-0.3	-0.4	-0.4	-0.3	-0.2	-0.2	-0.3	
	-0.4	-0.4	-0.2	0.1	0.3	0.2	0.1	0	0.2	0.4			
						0	-0.3						
	-0.3	-0.1	0.1	0.3	0.4	0.4	0.2	-0.1	-0.4				
					-0.2	0	0.1	0.2					
							0.3	0.1	0.2	0.3	0.5	0.5	
	0.5	0.5	0.4	0.2	-0.1	-0.3	-0.4						
						-0.4	-0.4						
		-0.4	-0.1	0.2									



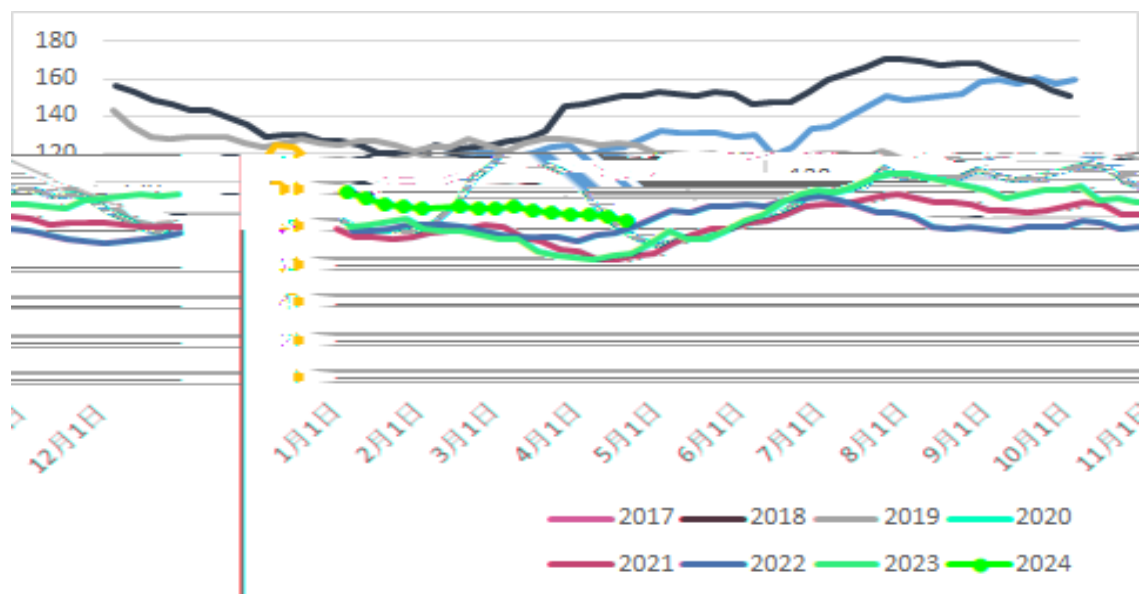




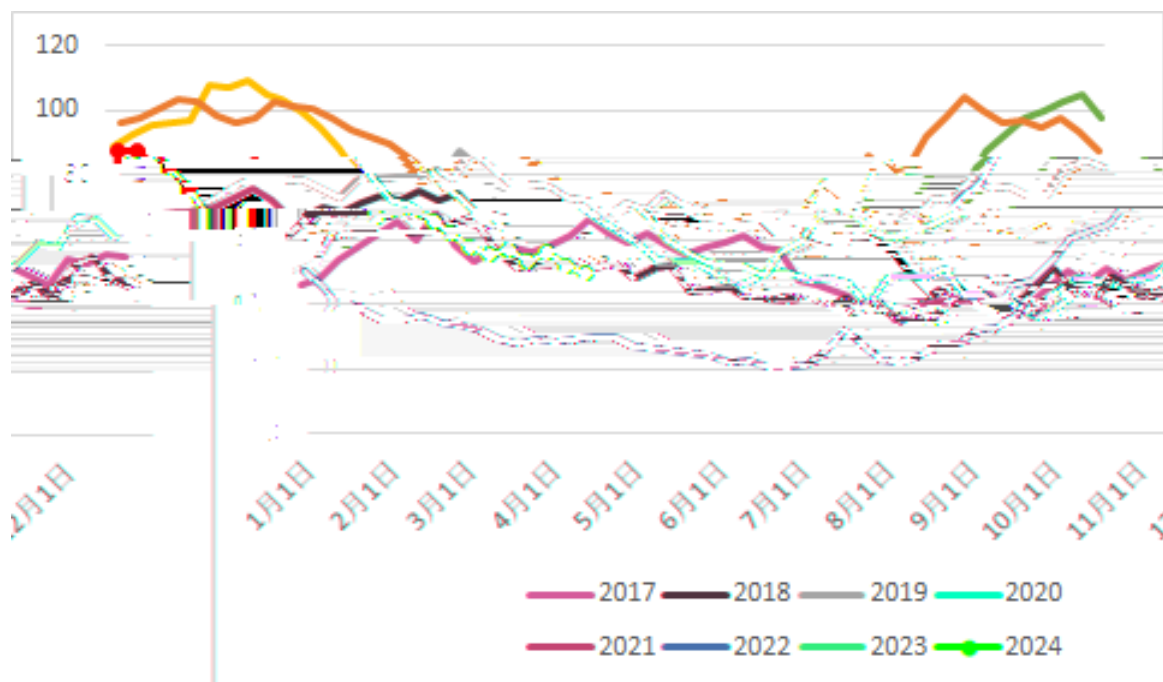




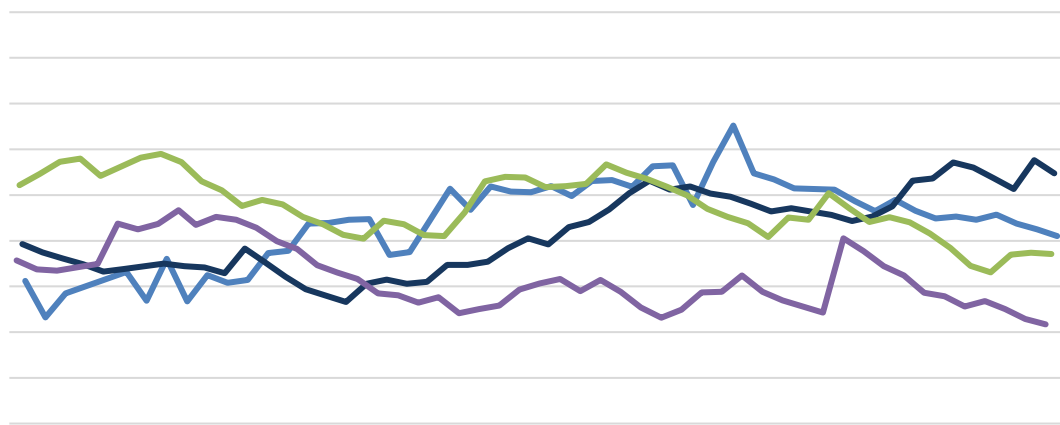
、 ! !



、 、



Blank rectangular box for text.



Blank rectangular box for text.

